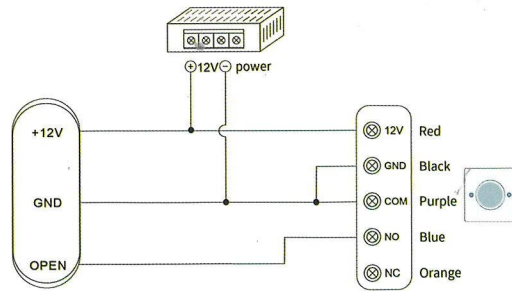
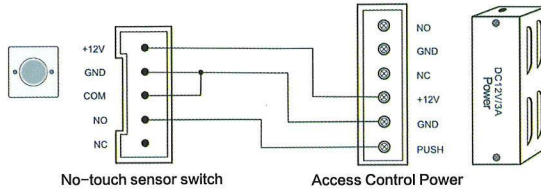


#### 4. Common power supply diagram



Access Control

#### 5. Access Control Special Power Supply



#### 6. Installation

- Fix back cover on the wall about 1.2 meters above the ground;
- Weld the wire solidly and wrap it with insulation tape;
- Fasten the panel to the back cover;

#### 7. Wi-Fi Matching (Optional)

Wave your hand quickly, enter into matching status when indicator light flashing. Please refer to Tuya Wi-Fi manual to connect to mobile phone.

#### 1. Introduction

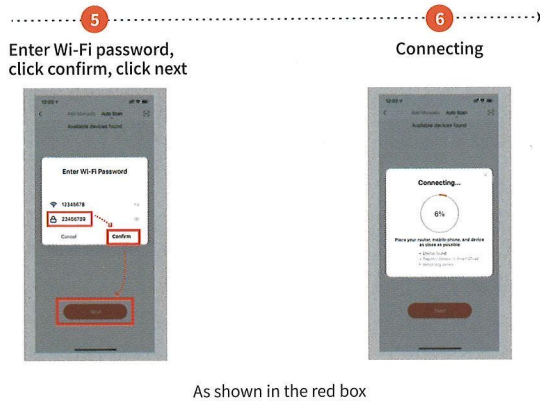
This exit button is no-touch infrared exit button with tuya smart APP (Tuya version is optional). It's very stable and sensitive, with automatic adaptability to ambient temperature and humidity, do not affect by the weather or temperature. Output the NO or NC signal when recognize the gesture. The indicator light is red when it's in standby, and the indicator light is green when the signal is recognized.

#### 2. Features

Feature	Description
Operating Voltage	DC9-DC12V
Operating Current	<600mA
Operating Temperature	-30℃~60℃
Operating Humidity	20%-80%
Dimension	86*86*23mm
Weight	82g

#### 3. Wiring diagram

No	Function	Color	Description
1	12V	Red	Positive power supply
2	GND	Black	Negative power supply
3	NO	Blue	Relay NO end
4	COM	Purple	Relay COM end
5	NC	Orange	Relay NC end



As shown in the red box



Power On



Power Off



## Mobile APP Download Guide

- 1 Scan QR code to download APP or search TuyaSmart to download APP



Scan QR code

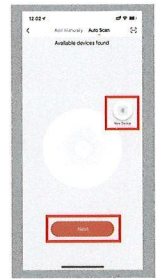
or



Search TuyaSmart to download APP



- 2 Open APP, click Add Device
- 3 Click Auto Scan, open Wi-Fi, and Bluetooth, click Start scanning
- 4 Found new device, click next



As shown in the red box

